

CAT.6 U/UTP LAN CABLE DATA SHEET

Supports category 6 (Class E) networks running up to 250MHz applications
Horizontal and backbone in structured cabling installations



Application

OUFU Category 6 U/UTP cables are specifically designed to deliver robust standards-based performance ensuring optimum bandwidth for today's high speed network applications. The cable is designed to support horizontal networking applications over distances up to 100 meters.

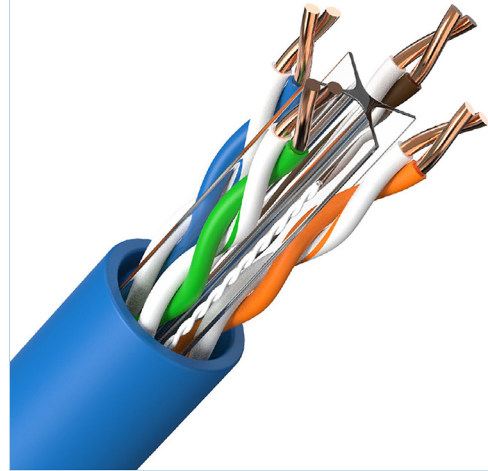
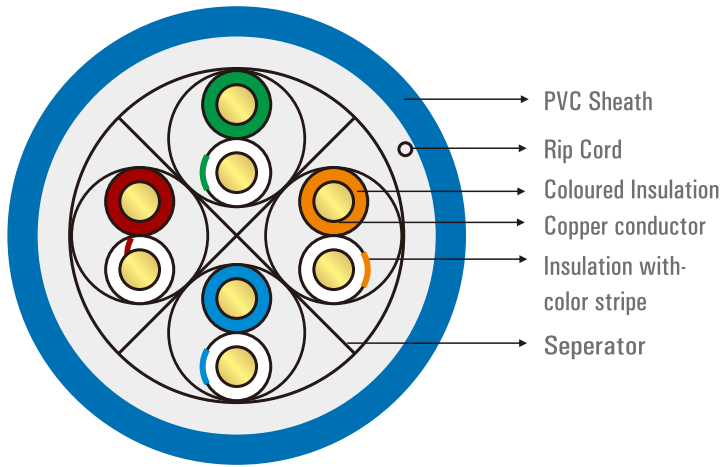
Standard

RoHS, ISO 9001, CE,
Conform to IEC, EIA TIA performance requirements

Features

- Conform to IEC, EIA TIA performance requirements
- 23AWG or 24AWG premium grade copper conductor
- U/UTP cable structure with cross separator inside
- Cable jacket available in LSZH, CM, PVC
- ETL certified Channel test
- CPR Euro classes certified on demand

Technical Drawing



Custom Options

1	CABLE CATEGORY	2	CABLE STRUCTURE	3	JACKET COLOR	4	JACKET MATERIAL	5	PACKING	6	CONDUCTOR GRADE
6	CAT 6	U	U/UTP	BL	BLUE	L	LSZH	3	305MTR/CARTON	P	Premium (23AWG)
				GY	GREY	LD	LSZH CPR Dca			-	Standard (24AWG)
				WH	WHITE	LC	LSZH CPR Cca				
				BK	BLACK	C	PVC CM				
				GR	GREEN	P	PVC				
				PR	PURPLE	E	PE				
				RD	RED						

Specification

Category	Parameter	Specification/Value
Model Specification	Specification Model	4x2x0.53
Conductor	Conductor Material	Oxygen-Free Copper
	Diameter (mm)	0.53 (+0.005/-0.005)
Insulation	Insulation Material	HDPE
	Nominal Insulation Outer Diameter (mm)	0.92 (+0.05/-0.05)
Wire Pairs	Pair 1/1P	Blue-White Blue
	Pair 2/2P	Orange-White Orange
	Pair 3/3P	Green-White Green
	Pair 4/4P	Brown-White Brown
Cabling	Arrangement	T568B
	Filler	Cross filler, Width $4.5 \pm 0.2\text{mm}$ × Thickness $0.40 \pm 0.05\text{mm}$
Ripcord	-	150D*3
Sheath	Appearance	Semi-matte surface
	Material	PVC Sheath
	Sheath Color	Purple
	Environmental Grade	ROHS
	Average Sheath Thickness (mm)	0.5 (+0.05/-0.05)
	Sheath Outer Diameter (mm)	5.9 (+0.20/-0.20)

Specification

Insulation Requirements	Insulation Tensile Strength (MPa)	≥ 16
	Insulation Elongation at Break (%)	≥ 300
Sheath Requirements	Sheath Tensile Strength (MPa)	≥ 13.5
	Sheath Elongation at Break (%)	≥ 125
Electrical Characteristics	Single Conductor DC Resistance, Maximum ($\Omega/100m$)	8.2
	Conductor-to-Conductor DC Resistance Unbalance, Max 20°C (%)	≤ 2
	Pair-to-Pair DC Resistance Unbalance, Maximum, 20°C (%)	≤ 4
	Characteristic Impedance per Pair (Z_c) Ω	100 ± 15
	Insulation Resistance, Minimum ($M\Omega \cdot km$)	5600
	Pair-to-Ground Capacitance Unbalance, Max ($pF/100m$)	330
	Dielectric Strength (Between Conductors)	DC 2.5KV, 2s or DC 1KV, 1Min no breakdown
Transmission Characteristics	Test Method	Fluke Link Test
	Test Standard	ANSI/TIA/EIA-568.2-D
Printing	Print Letter Dimensions (Height \times Width) (mm)	$2.8 \pm 0.1 \times 2.4 \pm 0.1$
	Print Color	Black
	Print Spacing Distance (mm)	998 ± 2
	Space Length (mm)	2.8 ± 0.2
	Meter Counting Method	001M-305M cyclic meter
	Sheath Printing	as requirement

Transmission Characteristics Per 100meter

Frequency MHz	Insertion Loss (dB/100m)	RL (dB)	NEXT (dB)	PSNEXT (dB)	ELFEXT (dB)	PSELFEXT (dB)	ACR (dB)	PSACR (dB)
1	2.0	20.0	74.3	72.3	67.8	64.8	72.3	70.3
4	3.8	23.0	65.3	63.3	55.8	52.8	61.5	59.5
8	5.3	24.5	60.8	58.8	49.7	46.7	55.5	53.5
10	6.0	25.0	59.3	57.3	47.8	44.8	53.3	51.3
16	7.6	25.0	56.2	54.2	43.7	40.7	48.6	46.6
20	8.5	25.0	54.8	52.8	41.8	38.8	46.3	44.3
25	9.5	24.3	53.3	51.3	39.8	36.8	43.8	41.8
31.25	10.7	23.6	51.9	49.9	37.9	34.9	41.2	39.2
62.5	15.4	21.5	47.4	45.4	31.9	28.9	32.0	30.0
100	19.8	20.1	44.3	42.3	27.8	24.8	24.5	22.5
200	29.0	18.0	39.8	37.8	21.8	18.8	10.8	8.
250	32.8	17.3	38.3	36.3	19.8	16.8	5.5	3.5

Marking options

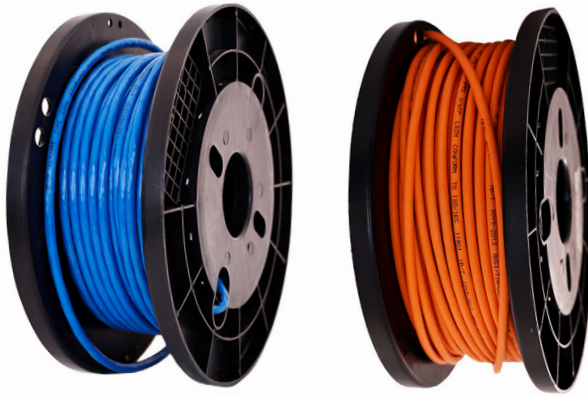


packaging

Cat6 305m carton Dimensions	Outer Box Dimensions	500*440*445
	Inner Box Dimensions	410*410*240
	Gross Weight per Carton	14KG

customization available

Reference Image



Samples

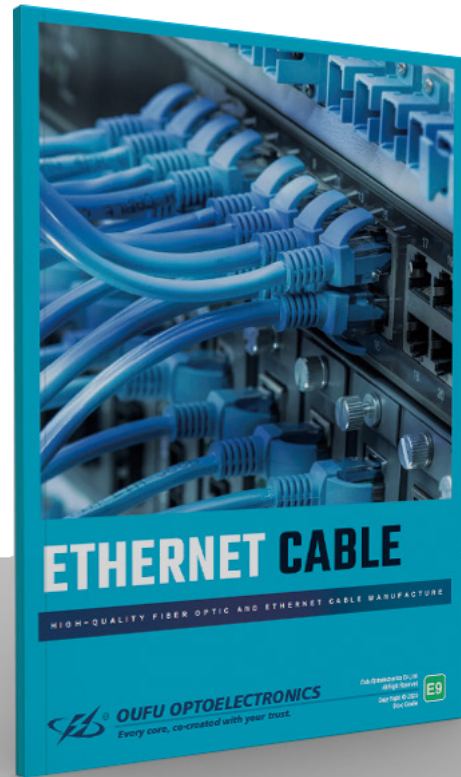
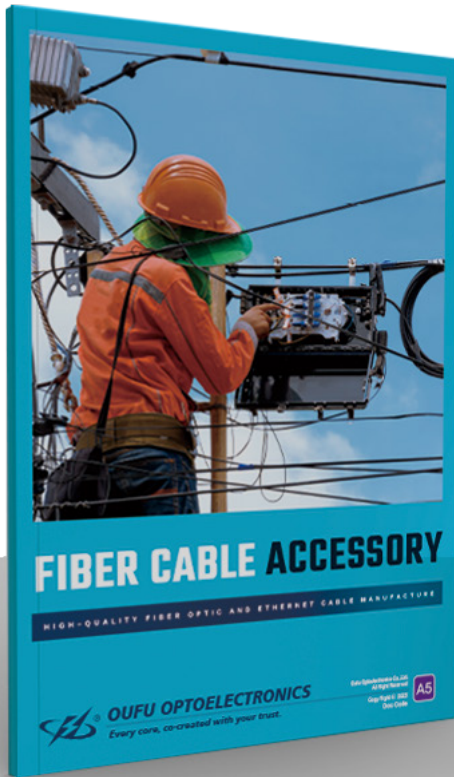


Cartons



Shipping

For more products Please Request Catalogues From your Dedicated Client Manager



Oufu Optoelectronics Co.,Ltd.

 www.oufu-fiber.com

 No.35-3 JinLing Road, YuHong District, ShenYang City, LiaoNing Province, China

 Room 818, Tower B, China Merchants Building, Hunnan District, Shenyang City, Liaoning Province, China

Oufu Optoelectronics Co.,Ltd.
All Right Reserved
Copy Right © 2020
Doc Code 2513 v1

